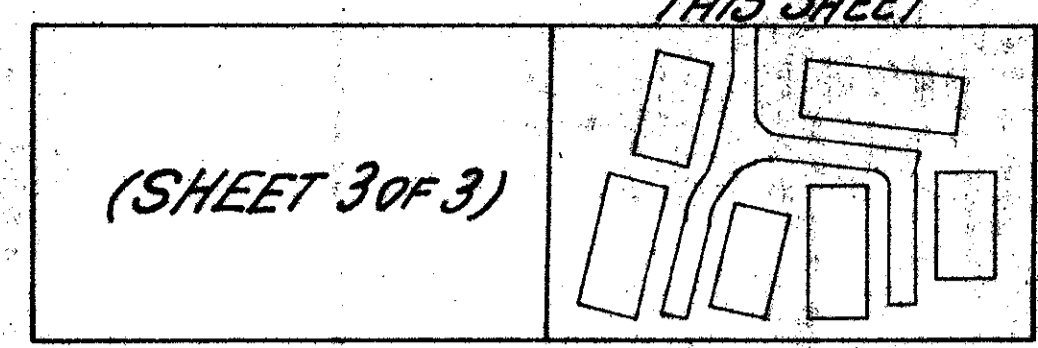


47/135

# BOCA BEND ~ A P.R.D.

KEY MAP  
NOT TO SCALE



135

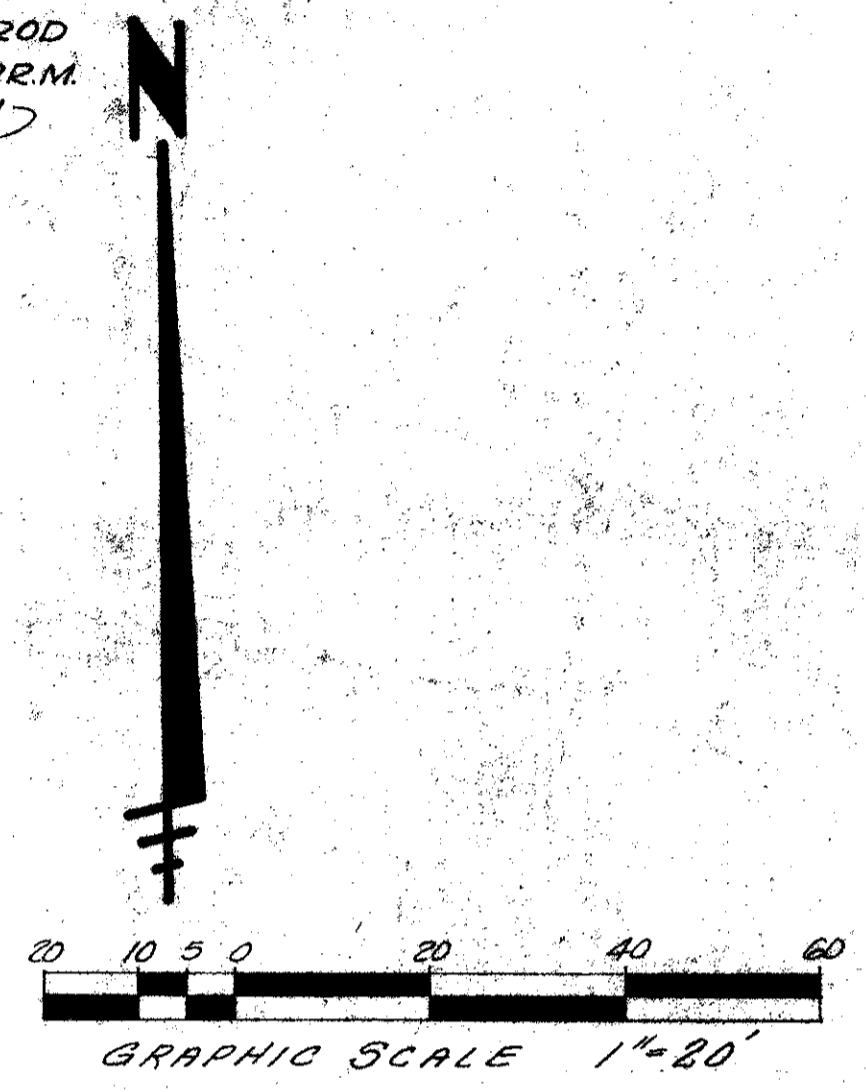
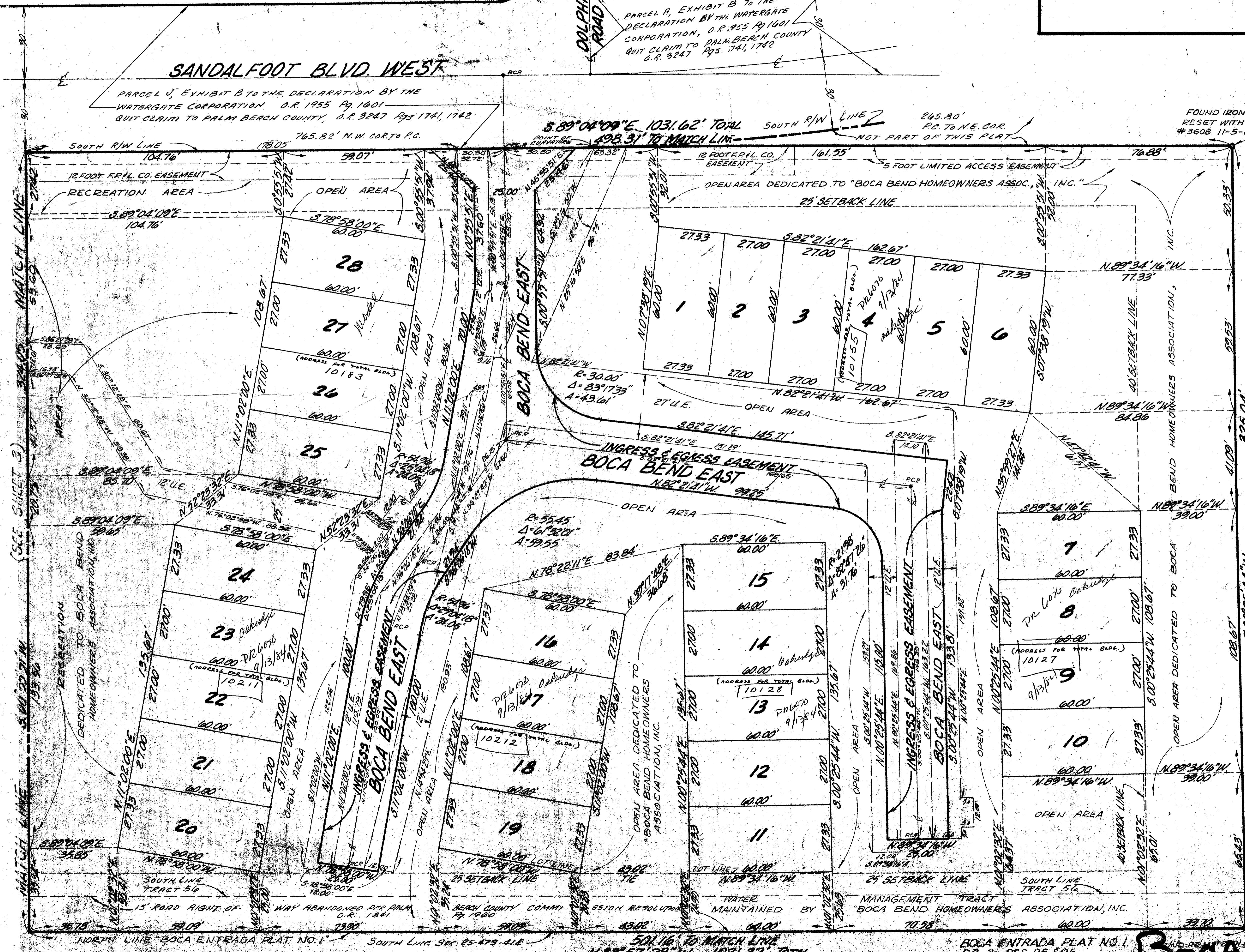
THIS INSTRUMENT PREPARED UNDER THE DIRECTION OF JOHN H. FITSGHEN  
**Craven Thompson & Associates, Inc.**  
LAND SURVEYORS - CIVIL ENGINEERS  
3974 OKEECHOBEE BOULEVARD  
WEST PALM BEACH, FLORIDA.

A REPLAT OF A PORTION OF TRACT 56 AND TRACT 57, FLORIDA FRUITLANDS CO. SUBDIVISION NO. 2 AS RECORDED IN PLAT BOOK 1 PAGE 102, OF THE PUBLIC RECORDS OF PALM BEACH COUNTY, FLORIDA, AND LYING IN SECTION 25, TOWNSHIP 47 SOUTH, RANGE 41 EAST, PALM BEACH COUNTY, FLORIDA.

O.R. 1955 Pg. 1601  
ASSESSOR'S MAP NO. 97  
(SHEET NO. 1) DECLARATION BY THE WATERGATE CORP.

PARCEL A, EXHIBIT B TO THE DECLARATION BY THE WATERGATE CORPORATION, O.R. 1955 Pg. 1601 QUIT CLAIM TO PALM BEACH COUNTY O.R. 3247 Pgs. 1741, 1742

FOUND IRON ROD RESET WITH P.R.M. #3608 11-5-81



25/47/41  
SUBDIVISION \* Boca Bend  
BOOK 47 PAGE 135  
FLOOD ZONE A-1 FLOOD MAP #1068  
QUAD \* 67 ZONING R-10  
SE PRD CODE 23430  
PUD NAME BOCA BEND

0204-000

NORTHEAST CORNER BOCA ENTRADA PLAT NO. 1 PLAT BOOK 31, PAGES 95 & 96 (P.O.C.)

47/135  
Boca Bend SHEET 3 OF 3 SHEETS

Per 80-134  
25/47/41  
800-DW/35  
opp pile  
5/13/81

PRD  
John  
5/13/81